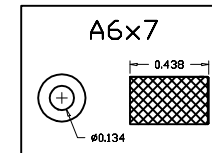
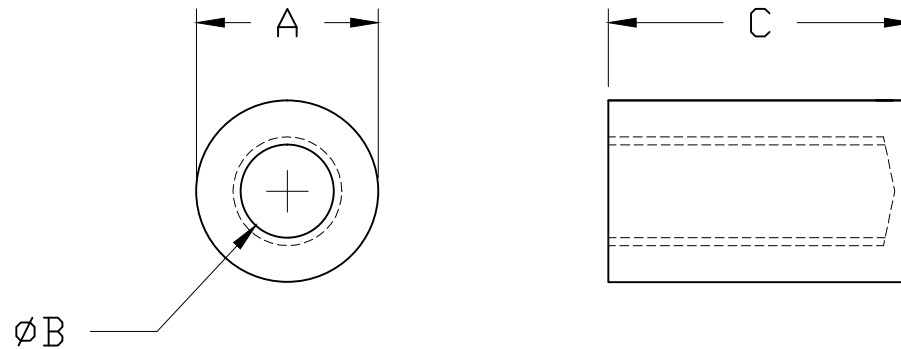
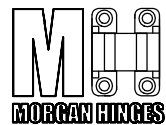


Knurled Inserts



	A	B	C							
			3/16	1/4	5/16	3/8	7/16	1/2	13/16	15/16
#4 PART	0.262	0.090	N/A	0.250 A4X4	N/A	0.375 A4X6	N/A	0.500 A4X8	N/A	N/A
#6 PART	0.262	0.134	0.188 A6X3	0.250 A6X4	0.313 A6X5	0.375 A6X6	0.438 A6X7	0.500 A6X8	0.875 A6X14	1.000 A6X16
#8 PART	0.262	0.164	N/A	0.250 A8X4	N/A	0.375 A8X6	.0438 A8X7	0.500 A8X8	N/A	1.000 A8X16
#10 PART	0.262	0.188	N/A	0.250 A10X4	0.313 A10X5	0.375 A10X6	0.438 A10X7	0.500 A10X8	N/A	1.000 A10X16

#4 PART	0.210	0.090	N/A	0.250 A4X4-3	N/A	N/A	N/A	N/A	N/A	N/A
#6 PART	0.210	0.134	N/A	0.250 A6X4-3	N/A	N/A	N/A	0.500 A6X8-3	N/A	N/A



Morgan Hinges, Inc.
5000 Eldorado Parkway
Suite 150-317
Frisco, TX 75033
(469) 362-8090
www.morganhinges.com

- Inserts are bare aluminum. No finish added

Part/Type: Knurled Inserts

Material: 6061T6 Aluminum

Tolerance: +/- 0.010

Units: IN

Revision Date: DEC-15-23

PG: 1/1