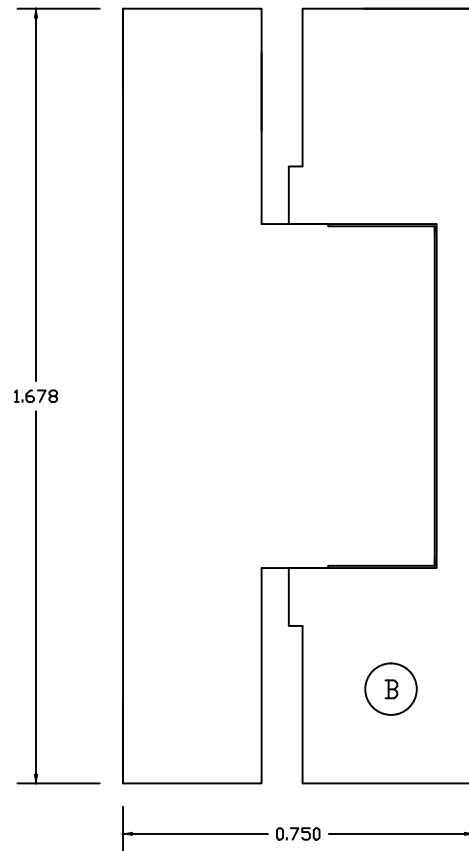
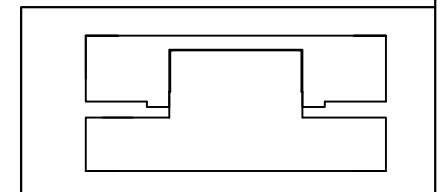
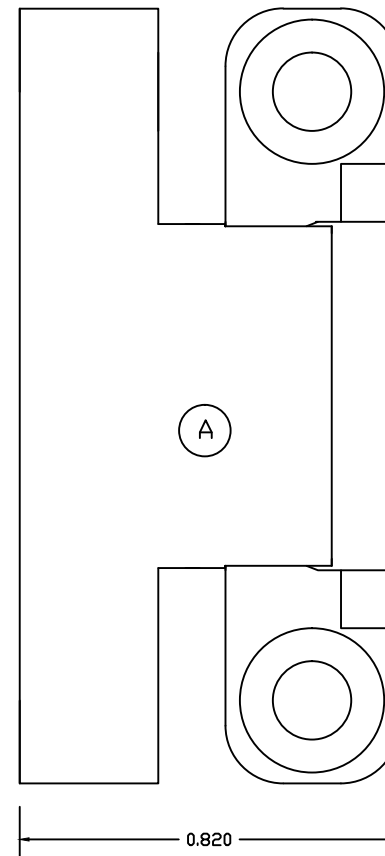


Closed View



Open View



Morgan Hinges, Inc.
 5000 Eldorado Parkway
 Suite 150-317
 Frisco, TX 75033
 (469) 362-8090
 www.morganhinges.com

A - One HCTH-3S-1/2 Side Frame (pg2)
 B - One HCTH-3S-1/2 Center Link (pg3)
 C - (Not Shown) One $\frac{3}{32}$ " x 1" stainless steel dowel pin
 (Brighton Best or equivalent). Min. double shear load 1800
 lbs.
 D - (Not Shown) If sprung, one RH 0.022 spring (0.022"
 thick with 0.150" dia. coil)

- Individual pieces have tolerances of +/- 0.005 or less.
 - Hinge pieces are hand filed to achieve an appropriate
 fit.
 - Overall tolerances for an assembled hinge may vary
 by up to +/- 0.010".

HCTH-3S-1/2 ASSY

Material: 416 Stainless Steel

Tolerance: +/- 0.005

Units: IN

Revision Date: AUG-10-12

PG: 1/3