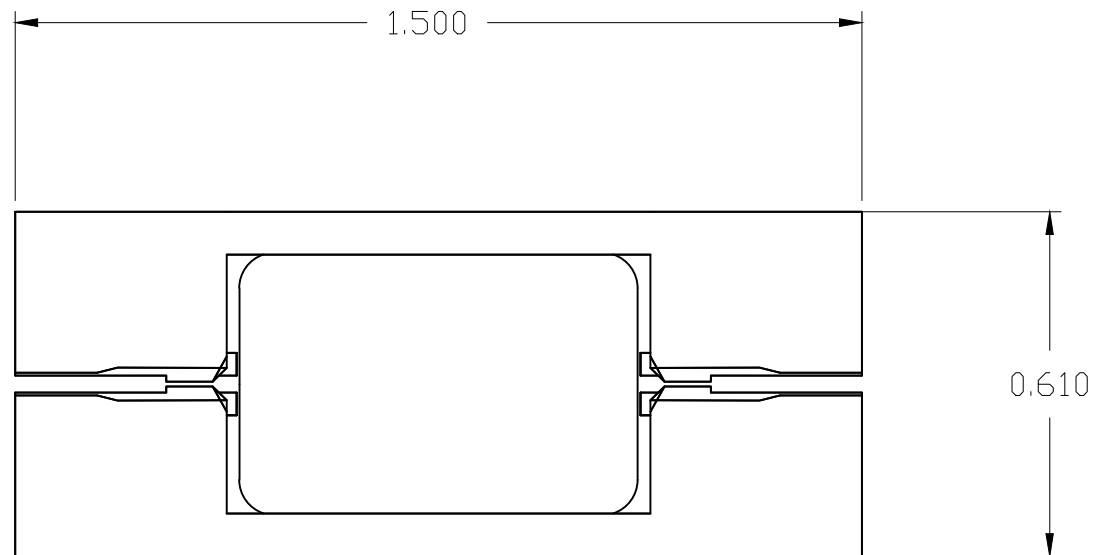
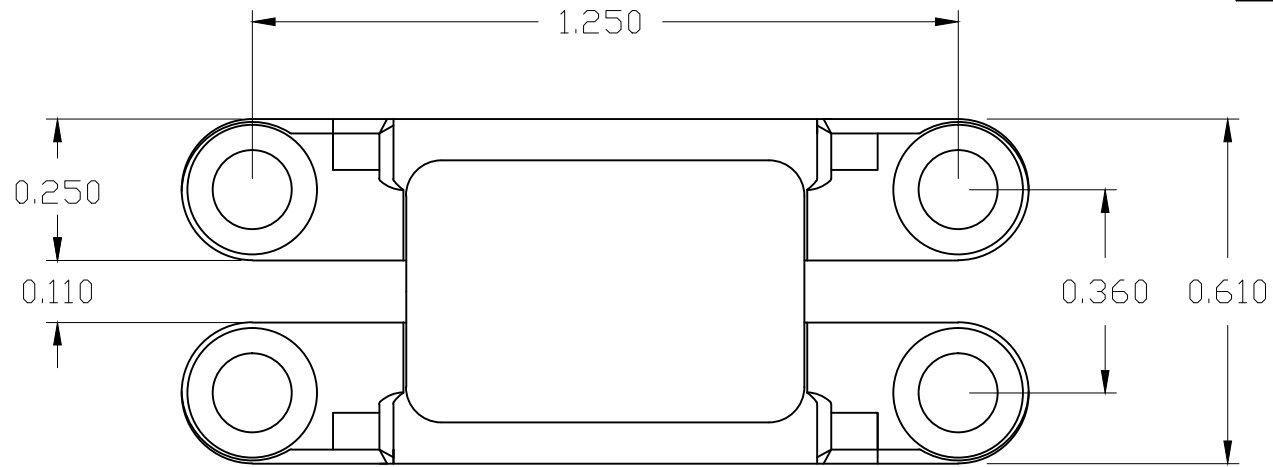


HCTH-2S-180RC



Morgan Hinges, Inc.
 12262 Genova Court
 Frisco, TX 75035
 (469) 362-8090
 www.morganhinges.com

- A - One notched HCTH-2S-180RC side frame (pg2)
- B - One HCTH-2S-180RC side frame without notch (insert on pg2)
- C - One HCTH-2S-180RC center link (see pg3)
- D - Two 1/16" x 1" stainless steel dowel pins (Brighton Best or equivalent). Minimum double shear load 800 lbs.
- E - (Not Shown) One LH0.020 spring (0.020" thick with a 0.120" dia. coil).

- Tolerances for individual pieces are +/- 0.005"
- Hinge pieces are hand filed to achieve an appropriate fit
- Overall tolerances for an assembled hinge may vary by up to +/- 0.010
- Heat treated to RC 42/45
- US Patent #4,928,350

-This drawing supercedes drawing dated MAY-06-12

Part/Type: HCTH-2S-180RC	
Material: 416 Stainless Steel	
Tolerance: +/- 0.005	Units: IN
Revision Date: NOV-17-17	PG: 1/3