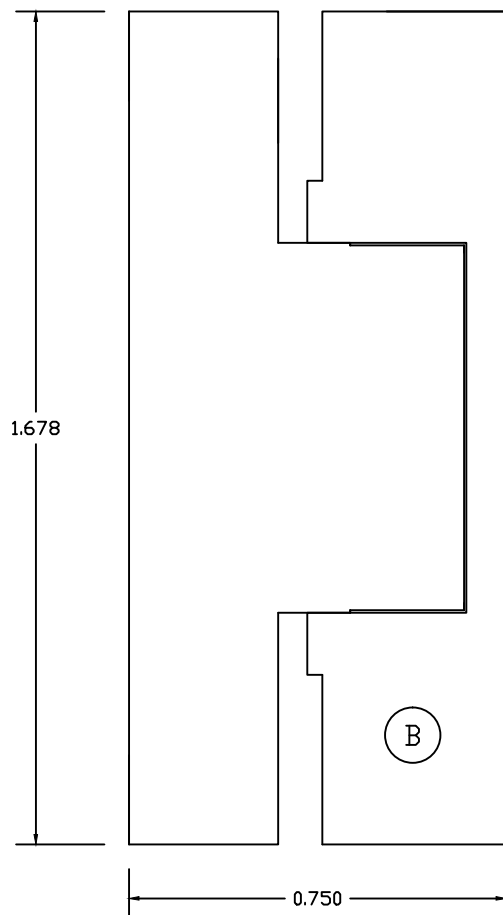
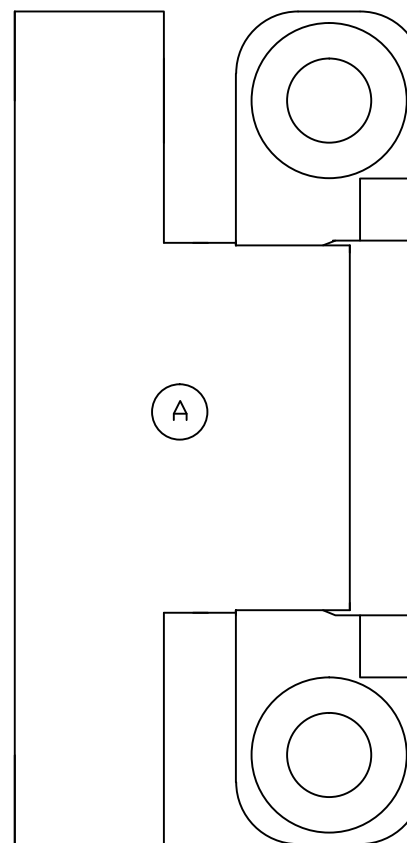


Closed View



Open View



Morgan Hinges, Inc.
 10260 Bowling Green Drive
 Frisco, TX 75035
 (469) 362-8090
 www.morganhinges.com

A - Side Frame (pg2)
 B - Center Link (pg3)
 C - One $\frac{3}{32}$ " x 1" stainless steel dowel pin (Brighton Best or equivalent). Min. double shear load 1800 lbs.

- Individual pieces have tolerances of +/- 0.005 or less.
- Hinge pieces are hand filed to achieve an appropriate fit.
- Overall tolerances for an assembled hinge may vary by up to +/- 0.010".
- US Patent # 4,928,350

HCTH-3S-1/2 ASSY	
Material: 416 Stainless Steel	
Tolerance: +/- 0.005	Units: IN
Revision Date: AUG-10-12	PG: 1/3